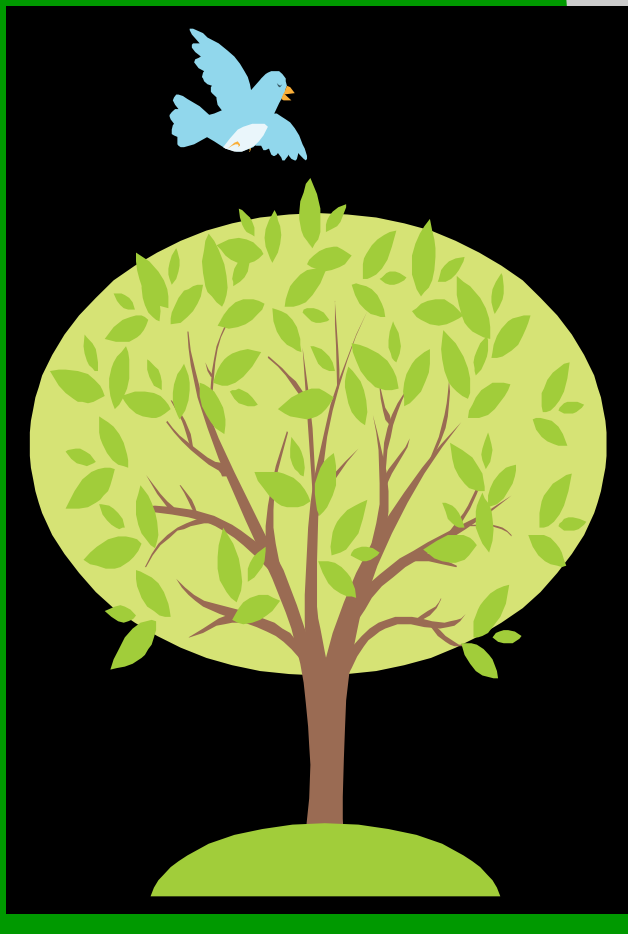


Bright Embers



Journaling *MY* Journey

All participants are invited to have their work displayed in an exhibition later this year.

Whether or not you choose to put your work on display is entirely up to you.

Children

Young People

Adults

Almost everybody, whether directly impacted (by the February 2009 bushfires or not), has been affected in some form. This may be through personal loss, re-living of past trauma, working with people directly impacted, or through an emotional response to the images and stories portrayed by the media.

All people for whom the February 2009 bushfires has evoked an emotional response have their own individual stories, recollections and accounts of that experience. This may be their own or their family's experience, how the media stories and images made them feel, or what they were doing and how they heard about the devastation.

Tell

YOUR story

YOUR way

- Storywriting - typed or handwritten
- Photographs - your own or work with a photographer
- Audio recording
- Art - painting, drawing, collage
- Film / Dvd
- Songwriting
- Poetry & Verse
- Creative Dance